

/HydroMet



/datasphere
**Smart Environmental
Data Hub.**

/ KISTERS
Empowering decisions of tomorrow

All your data. One platform. Better decisions start here.

**Monitor, visualise and decide:
All in one place.**

What is datasphere ?

Built for operational teams in government, utilities, agencies, and the industrial and infrastructure sectors, KISTERS datasphere is a cloud-based environmental intelligence platform that brings all your critical data together in an intuitive interface. Thanks to its data-agnostic design, there are no limitations on data sources or types, while its modular structure allows you to add advanced tools as needed.

Why datasphere ?

With KISTERS datasphere, you can access your data from any browser without any installations, delays, or coding. Teams can monitor device status in real time, manage permissions with flexible user roles (Viewer, Admin, Org Manager, and Reseller), and integrate third-party sources through dynamic logging and secure APIs. Setup takes just minutes. Unlike many platforms, Datasphere offers full access to historical scalar data without arbitrary limits.

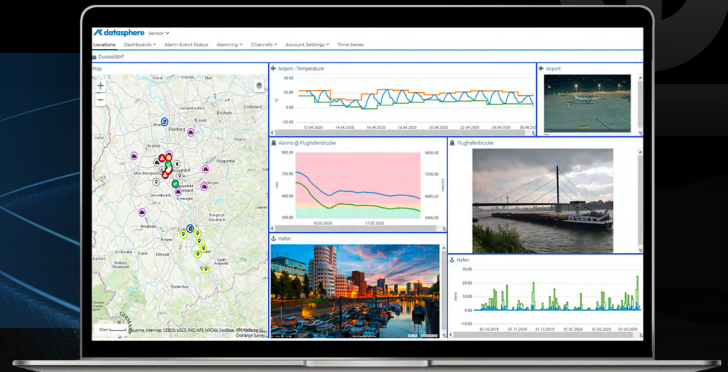


Datasphere is very straightforward, making it easy to quickly understand what's happening at a specific site or across a network of sites.

Geosphere, Italy

Features focused on visibility.

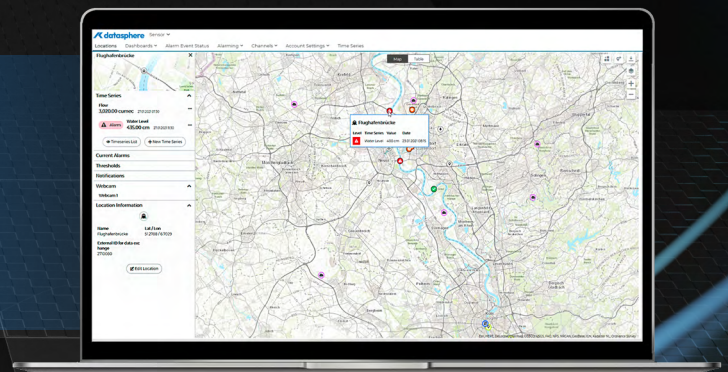
Create custom dashboards tailored to users or tasks. Visualise data, spot trends, and make informed decisions quickly.



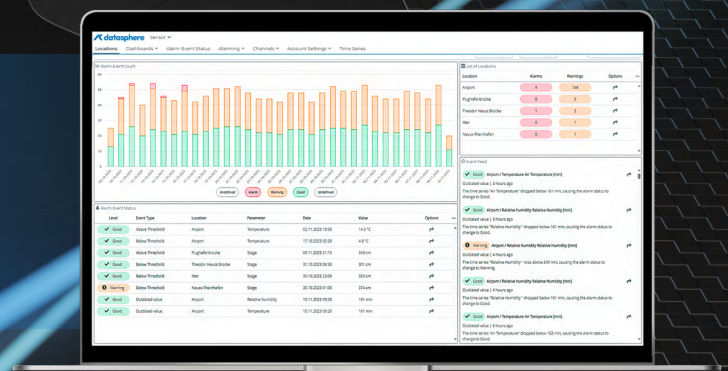
Compare and overlay sites, rainfall over time, water level changes, forecast data with sensor data, temperature readings, and battery voltage at a station all side by side.



Use GIS-based visualisations to get a clear, geospatial view of your assets.



Use colour-coded alert indicators (e.g. red, amber, green) on graphs and dashboards.



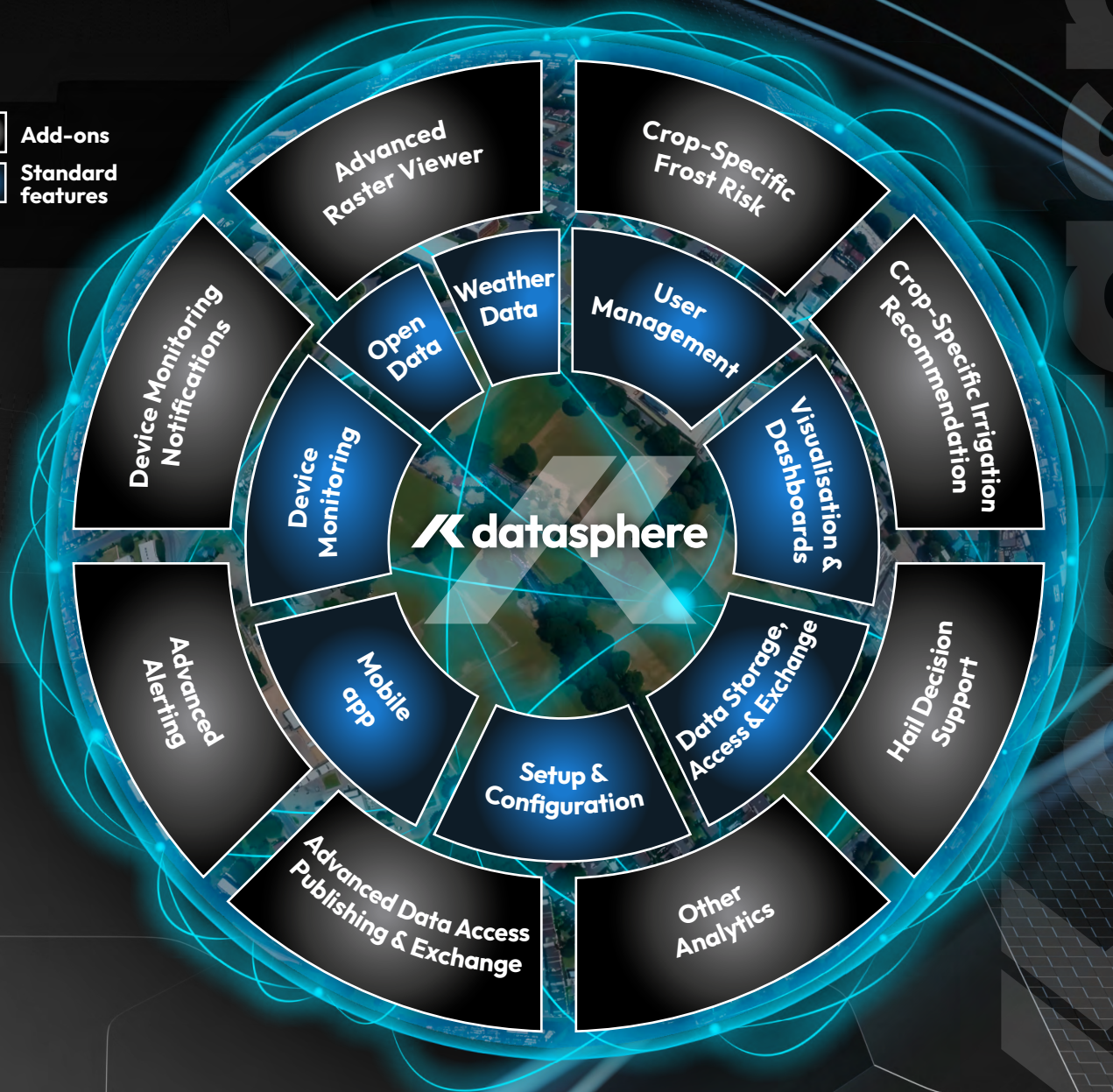
Add-ons available.

Datasphere's modular design supports add-ons that are tailored to operational risk.

Only pay for what you need – when you need it.



-  Add-ons
-  Standard features



Hail Decision Support Module.

Prepare for, respond to, and assess hail events with confidence.



Forecast hail events up to 48 hours in advance.



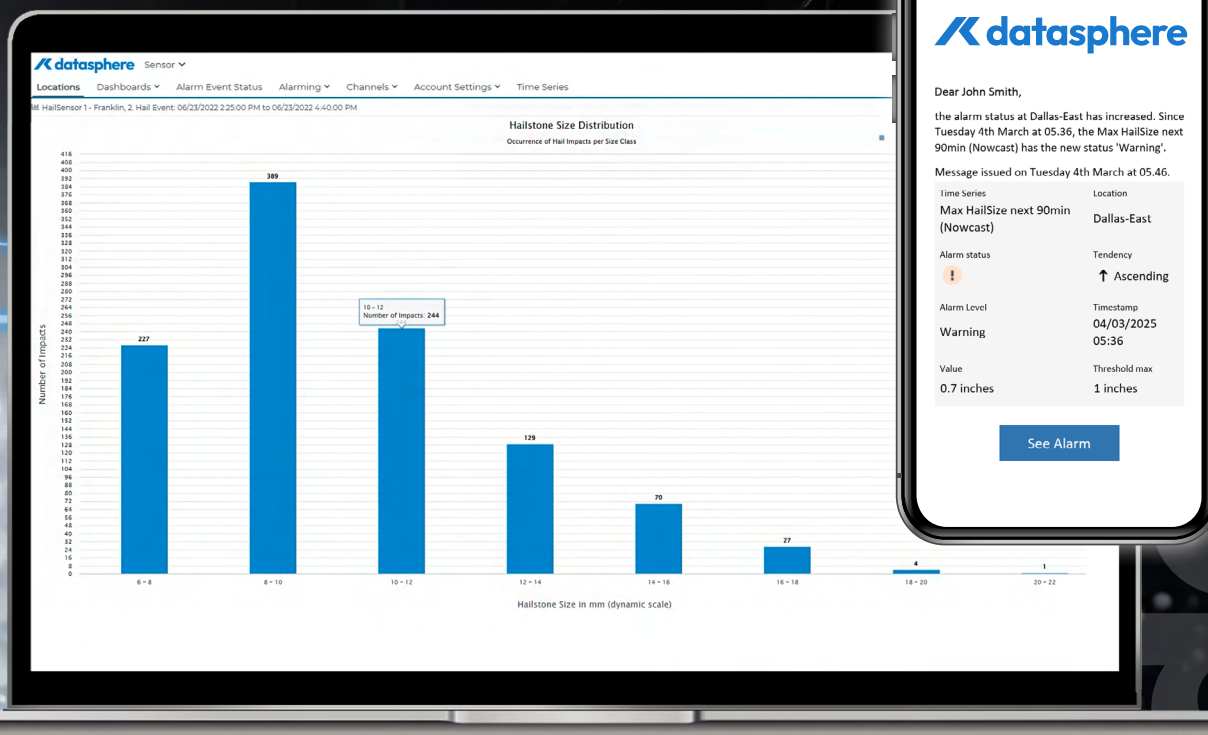
Receive nowcasts and live alerts up to 90 minutes before impact.



Predict hail size and potential damage zones.

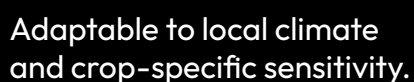
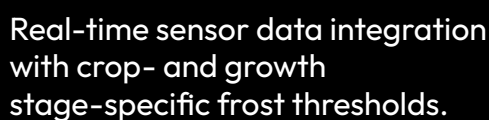
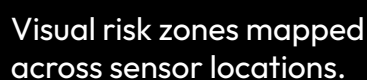
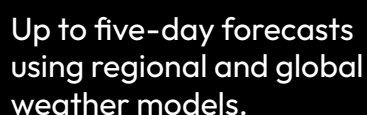


Analyse events post-storm with precise, visualised reports.



This hail solution gives our members the ability to better protect their assets, especially fleet vehicles, by providing up to 90 minutes of advanced hailstorm notification. With roughly 90% accuracy, it not only alerts us when a hailstorm is approaching but also reports the expected hail size.

CIRSA, USA



Irrigation Recommendation Module.

Plan smarter irrigation for healthier crops and optimised water use.



Crop- and growth stage-specific forecasts.



ETa-based forecasts tailored to crop type and soil.



Real-time soil moisture integration.



Scenario simulations to optimise water usage and avoid over/under irrigation.



» Raster Viewer Module.

Visualise complex weather patterns with enhanced forecasting layers from multiple open data weather models.



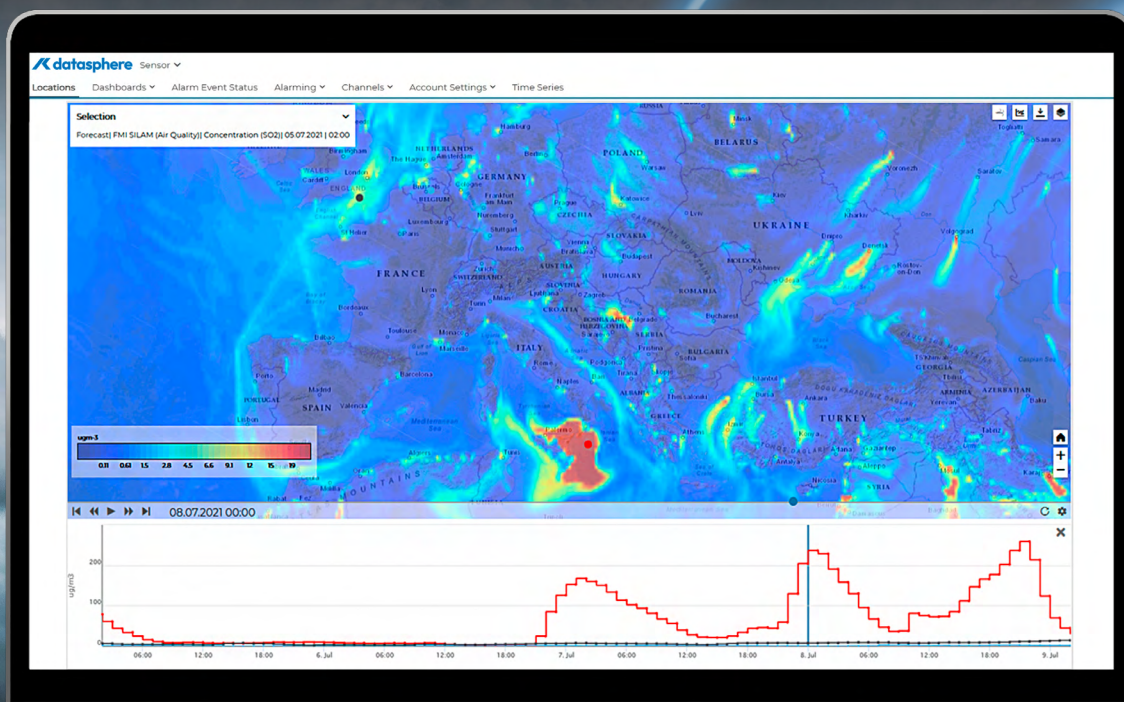
View advanced forecast layers from top global models like GFS, ECMWF, ICON-EU, and more.



Access atmospheric and upper-air data to anticipate storms, hail, and temperature shifts.



Improve planning and response for weather-sensitive operations with clear visual context.



Advanced Alerting Module.

Receive threshold-based, real-time alerts to be notified before conditions become critical.



It works with any sensor or forecast data ingested into Datasphere.



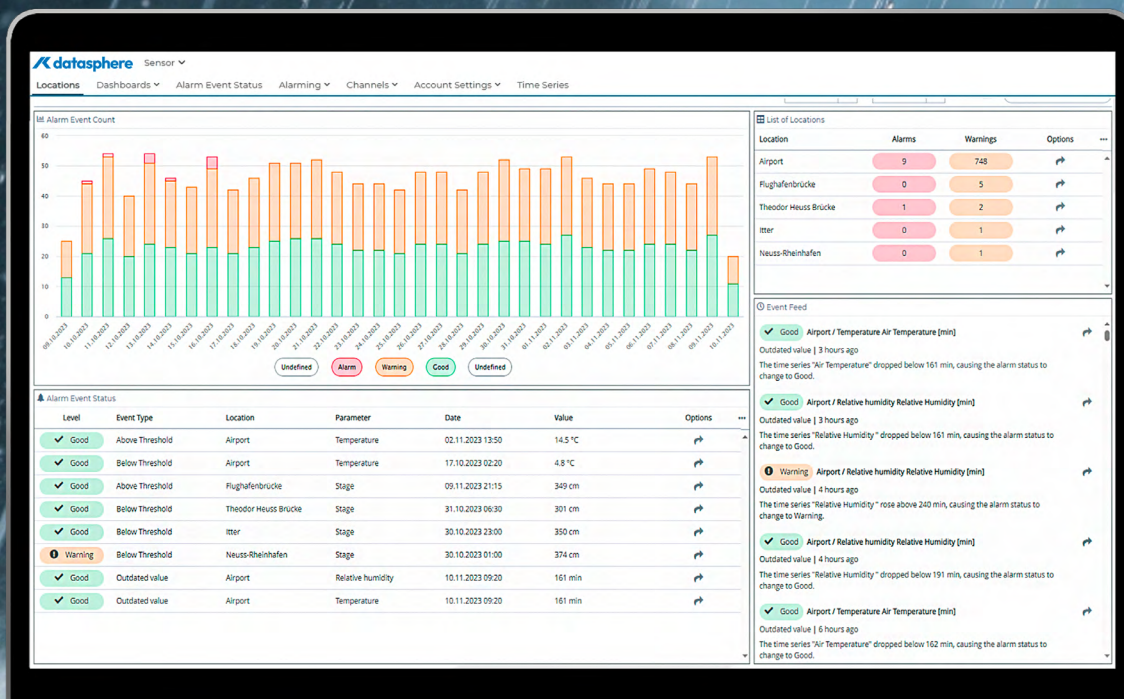
Supports red, amber, and green alert levels.



Thresholds can be easily configured by parameter or location.



Flexible notification system: email, SMS, or WhatsApp channels.



Advanced Data Access, Publishing & Exchange Module.

Seamlessly import, export, and publish data through secure APIs, which are perfect for integration with internal or third-party systems.



Automated data flows with secure API integration.



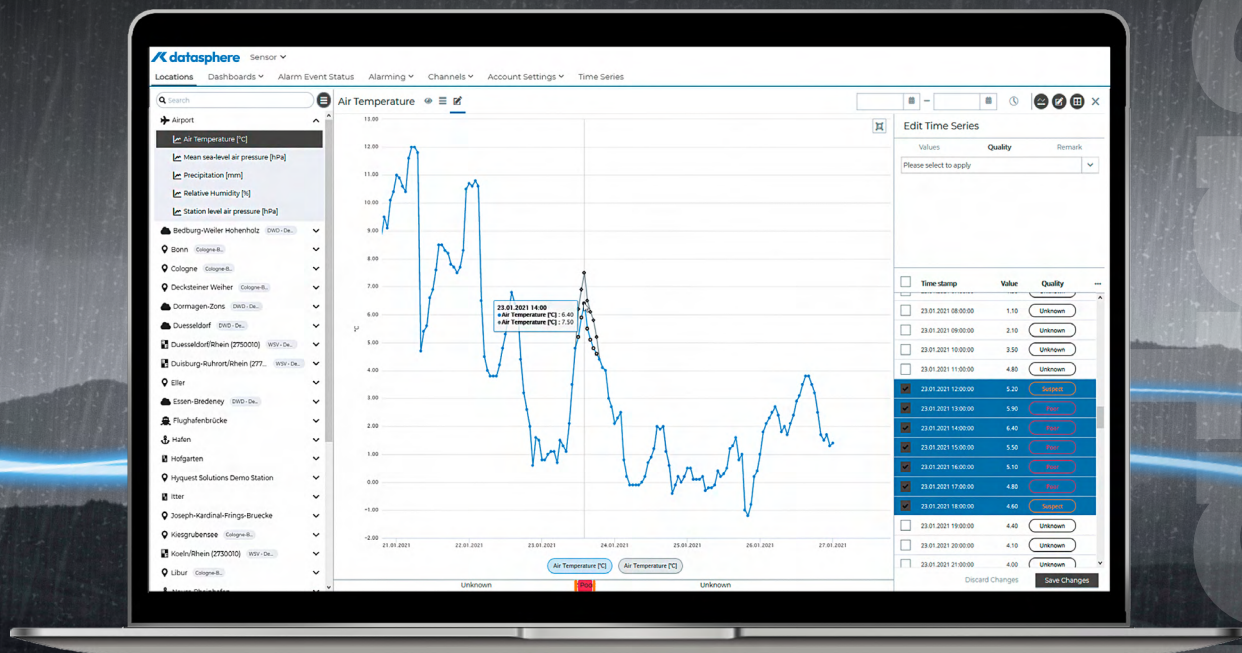
Flexible publishing to external databases or platforms.



Reduced manual handling and errors.



Supports compliance, transparency, and third-party reporting.



Other tools.



Built-in manual editing and validation tools.



Monitor critical sensor locations through connected webcams.



End Customer and Reseller set-up facilities.



Data sharing via public widgets and via different organisations.

/HydroMet

**Experience
the full potential
of your data.**



Who are we?

We're KISTERS – and for over 60 years, we've specialised in helping our customers collect, analyse and share the environmental data that will shape the future.

Through innovative, digitally-focused solutions, we develop advanced systems that enable our customers to capture and manage information at a higher quality than ever before. So they can make the solutions our world needs to thrive.

KISTERS Europe | hydromet.sales@kisters.eu | kisters.eu
KISTERS Australia | sales@kisters.com.au | kisters.com.au
KISTERS Latin America | sales@kisters-latam.com | kisters-latam.com
KISTERS New Zealand | sales@kisters.co.nz | kisters.co.nz
KISTERS North America | kna@kisters.net | kisters.net

KISTERS
Empowering decisions of tomorrow