

An aerial, high-angle photograph of a city street. A prominent white-striped crosswalk cuts diagonally across the dark asphalt. Three pedestrians are visible: one in the upper left, one in the center, and one in the upper right. Their long, dark shadows are cast across the crosswalk and the surrounding pavement, indicating a low sun position. The overall tone is dark and moody.

**/ HydroMet**

** datasphere**

Where data informs decisions

** KISTERS**  
Empowering decisions of tomorrow

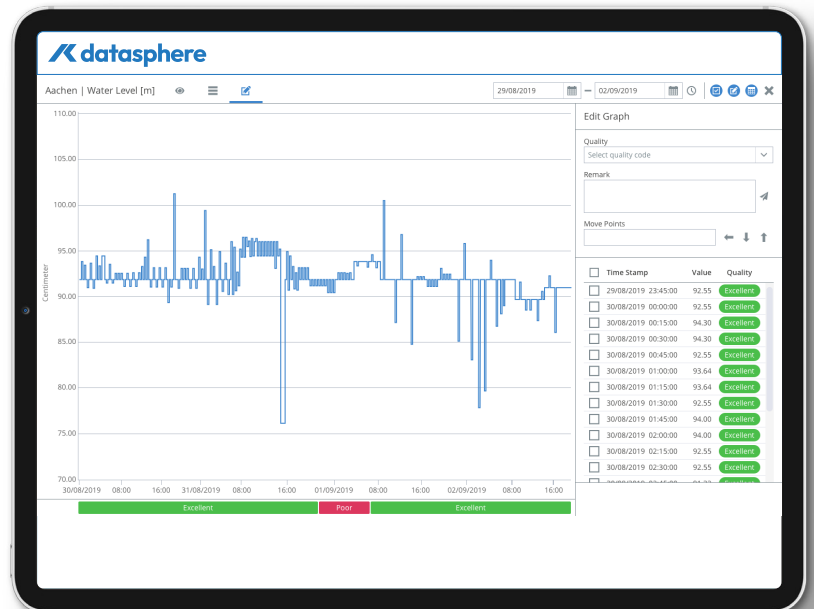
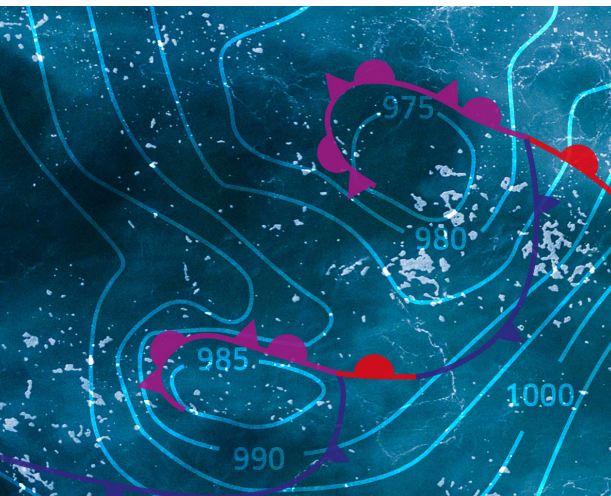
# Where data informs decisions

Data-based decision-making is becoming ever more crucial for any modern business looking to make progress. In short: The bigger and more varied your data pool the more interrelations you can identify to make the most informed decisions – providing you can access and analyze that data pool.

All around the world, sensor networks such as the Internet of Things are generating ever-increasing volumes of data. Take your chance and benefit from the mass of data: With datasphere, the global all-in-one solution for sensor data and raster data. Here you can always know what's going on in your IoT network and more ... datasphere empowers you to make the right decisions at the right time.

The cloud-based solution with easy-to-use viewing, alarming and integration features is the perfect basis for a range of applications - from simple sensor network management to environmental monitoring, infrastructure/asset monitoring, smart cities, internet of things, through to new data-based business models.

As the data pool continues to grow with the integration of new measurement points as well as open and commercial data, datasphere will enable new interactions and more opportunities in the future.



## Why datasphere?

datasphere combines proven IT technology and decades of expertise from the water sector in an easy-to-use system to an affordable price. Customers know KISTERS as a reliable partner for pioneering water management solutions. In datasphere, we share our know-how in a scalable solution for everyone.

Our guiding principle: You as the user decide which parts of our solution you really need.

### Your benefits:

**Unique** customer-oriented pay model: unlimited number of users, individually tailored packages

**Proven** big data technology

**Easy** to use system where you can compare any sensor data from any sensor provider

**Huge** data pool: your own local data, open data, commercial data, ...

**Available** everywhere and anywhere in your web browser

**Share** your own data with other stakeholders

**Access** to professional environmental knowledge and consultancy





## Functions & Features

Manage your sensor network or other assets with datasphere's easy-to-use monitoring dashboards and real-time notifications.

**You benefit from:**

### ➤ Easy Viewing

You can access your sensor data and raster data easily anywhere from any device at any time. Maps and graphs with real-time data as well as historical developments within your system are a good place to find current and recurring issues.

### ➤ Alarming

Receiving real-time notifications might be essential for your business. With the easy-to-use alarm management, you can set up individual thresholds and manage alarm recipients for your own sensors, but also on Open data or data that have been shared with you. Thus every alarm goes to the right team so they can react accordingly. Statistics and a historic record of alarms support you in learning the behavior of your network.

### ➤ Integration with open data & Data sharing

Subscribe in the blink of an eye to a wide range of open and commercial data that is available to help expand your network quickly. It is also possible to share your own sensor data with other users via datasphere – either privately within datasphere or to users on the open Internet. This opens up a wide range of business opportunities and collaborations for your organization.

### ➤ Validation & Editing

Better data means better decisions: This is why datasphere offers editing and validating tools for improving the quality of your data.

### ➤ Analyzing & Reporting

Easily perform and persist extra analysis to your data or add forecast timeseries to them, issued from meteorological or other models. Different kinds of tabular reports give you a summary of current and past sensor behavior at the click of a button. Knowing what happened in the past helps you shape your understanding of the future.

### ➤ Watching

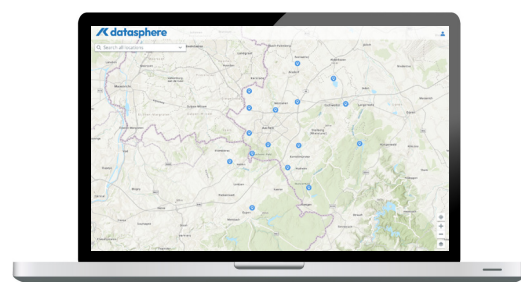
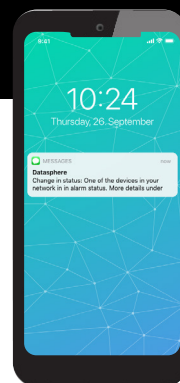
You can easily keep an eye on your sensor locations using webcams.

## Anything in the pipeline?

### Definitely yes:

With the aim of tapping the full potential of your data, datasphere will be expanded step by step, e.g. by the addition of forecast data, spatial data, data evaluations and much more. With these, you can tailor your individual datasphere solution. Whatever is your vision, datasphere will support you.

**Please contact us.**



## About KISTERS

KISTERS datasphere is a product of KISTERS Group. KISTERS is a medium-sized IT company with more than 750 employees, headquartered in Aachen/Germany, and at numerous international subsidiaries. Environmental data management is the core of our business and passion right from the founding of the company as an engineering consultancy in 1963. Today, our IT experts and engineers develop professional software solutions for water resources management. KISTERS' subsidiary HyQuest Solutions designs and manufactures our own brand of precision instruments, sensors and data loggers for hydrological, environmental and air quality monitoring networks. KISTERS' tailor-made solutions are used worldwide by local, regional, national and supra-national authorities, associations, engineering offices and research institutions.



© KISTERS AG | 04.2024